

# SELF BRIEFING

---



**21<sup>ST</sup> FAI EUROPEAN GLIDING CHAMPIONSHIPS**

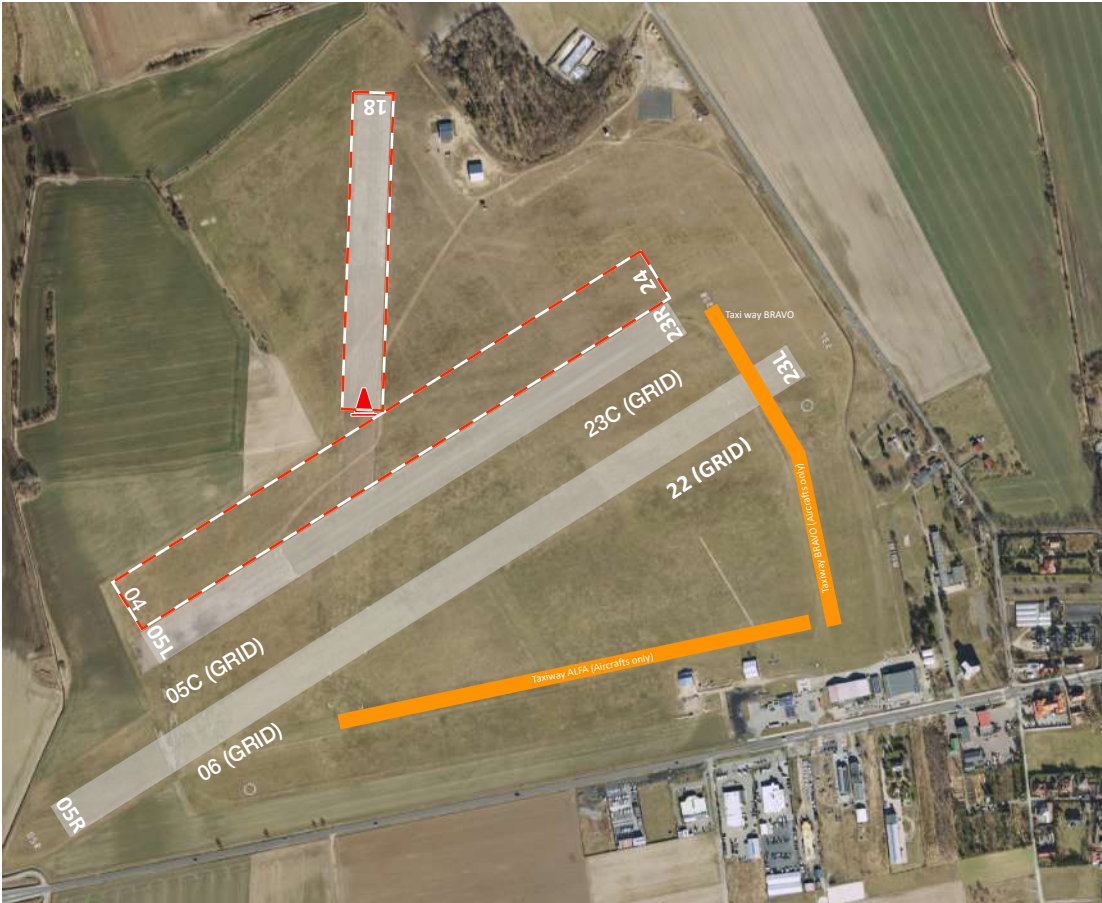
## INDEX

---

MAP		PAGE
1	ARFIELD INFORMATION	3
2	CONTEST SITE BOUNDARIES	4
3	CONTEST SITE MAP -GENERAL	5
4	CONTEST SITE MAP - ADMINISTRATION	6
5	GRID 23 , WEIGHT CHECK & GRID TRAFFIC	7
5a	GRID 23, CAR PARKING AND TRAFFIC (DURING TAKEOFF TIME)	8
5b	GRID 23, CAR TRAFFIC (AFTER TAKEOFF TIME_	9
6	AEROTOWING & RELANDING PROCEDURE 23 (DURING TAKEOFF TIME)	10
6a	CANCELED	11
7	LANDING PROCEDURE 23 FOR RELAUNCH (DURING TAKEOFF TIME)	12
7a	EMERGENCY LANDING PROCEDURE 23 in case of launch failure on low altitude	13
8	FINISH AND LANDING PROCEDURE 23	14
9	LANDING 23 PROCEDURE AND TOWING BACK TO GLIDERS PARKING	15
10	GRID 05, WEIGHT CHECK & GRID TRAFFIC	16
10a	GRID 05, CAR PARKING AND TRAFFIC DURING T (DURING TAKEOFF TIME)	17
10b	GRID 05, CAR PARKING AND TRAFFIC DURING T (AFTER TAKEOFF TIME)	18
11	AEROTOWING & RELANDING PROCEDURE 05 (DURING TAKEOFF TIME)	19
11a	CANCELED	20
12	LANDING FOR RELAUNCH PROCEDURE 05 (DURING TAKEOFF TIME)	21
12a	EMERGENCY LANDING PROCEDURE 05 in case of launch failure on low altitude	22
13	FINISH AND LANDING PROCEDURE 05	23
14	LANDING 05 PROCEDURE AND TOWING BACK TO GLIDERS PARKING	24
15	DEPARTURE POINTS	25
16	RADIO FREQUENCIES	26

### LESZNO AIRFIELD DETAILS

- Airfield name: Lotnisko Leszno (ICAO: EPLS)
- Location: N 51°50'07.0" E 16°31'21.6"
- Elevation: 310ft AMSL (95 m)
- Frequency: Leszno Radio 122.305 (8,33kHz spacing)
- Runways:
  - 05R/23L (1320 x 50 m, grass) / main runway
  - 05L/23R (950 x 50 m, grass) / reinforced grass runway
  - 18 (450 x 50 m, grass) runway temporarily shortened for EGC 2023: 26.07 - 12.08.2023*
  - 06/24 (900 x 100 m, grass) set temporarily, only for landing EGC gliders*
- Leszno Airfield website: [www.lotniskoleszno.pl](http://www.lotniskoleszno.pl)
- On-line webcam: [www.lotniskoleszno.pl/kamera/](http://www.lotniskoleszno.pl/kamera/)
- Time zone: UTC +2

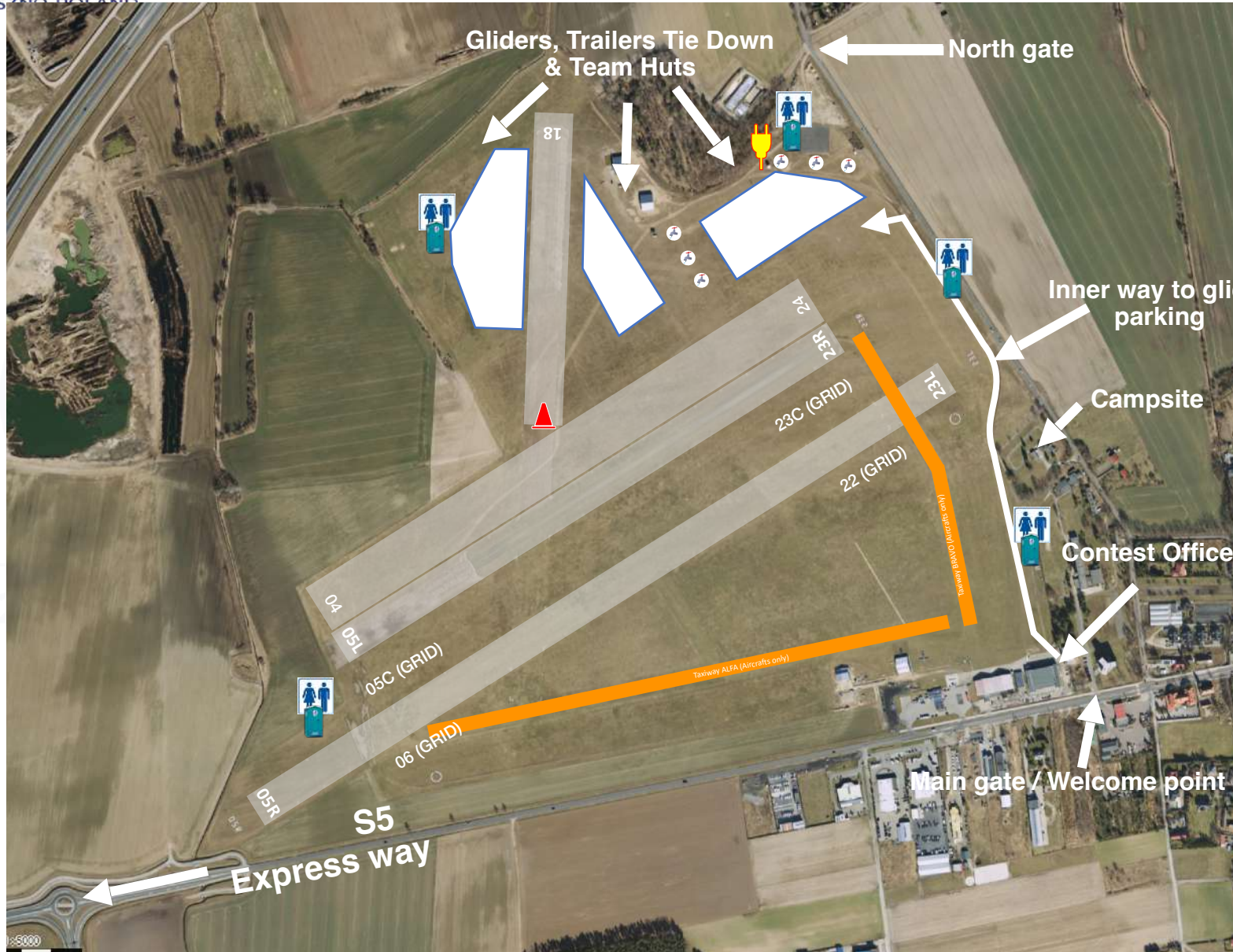


Contact details: +48 577 215 344, [info@lotniskoleszno.pl](mailto:info@lotniskoleszno.pl)





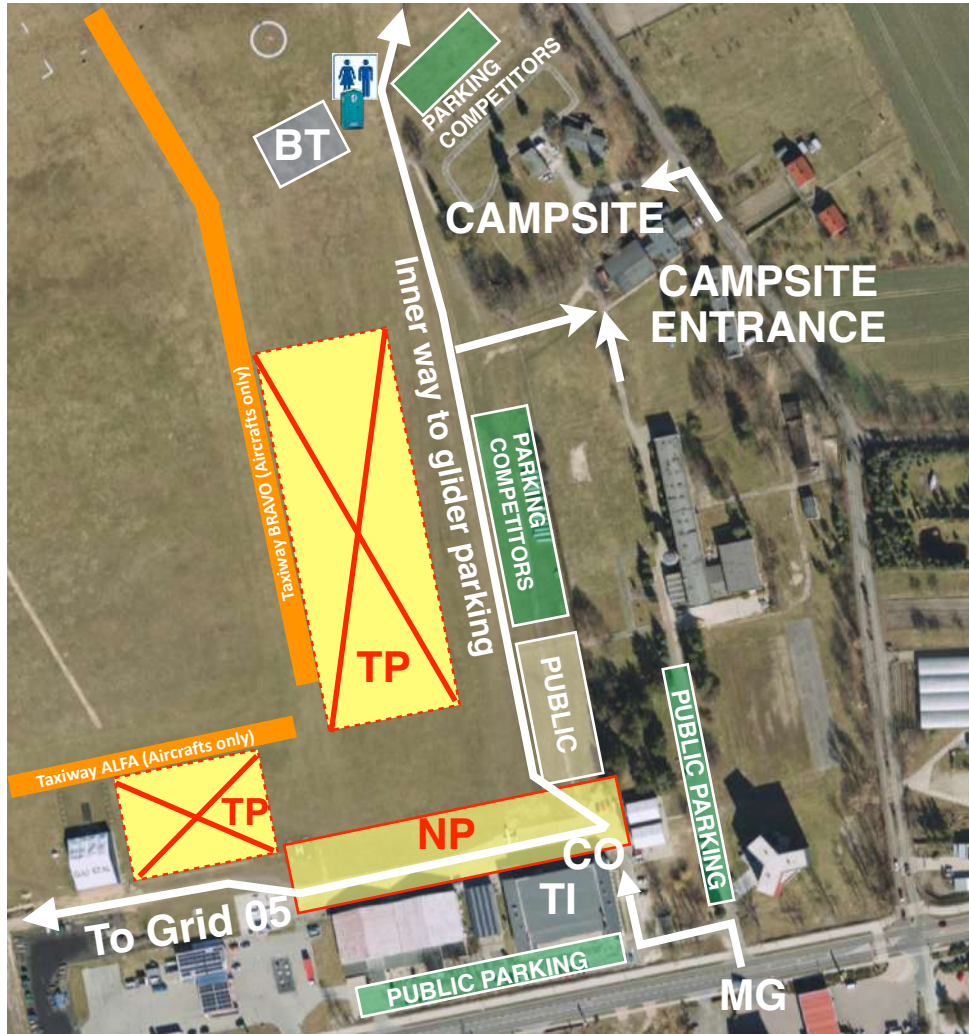
# MAP 3. CONTEST SITE MAP - GENERAL



SCAN QR CODE TO OPEN  
GOOGLE MAP OR CLICK: [HERE](#)



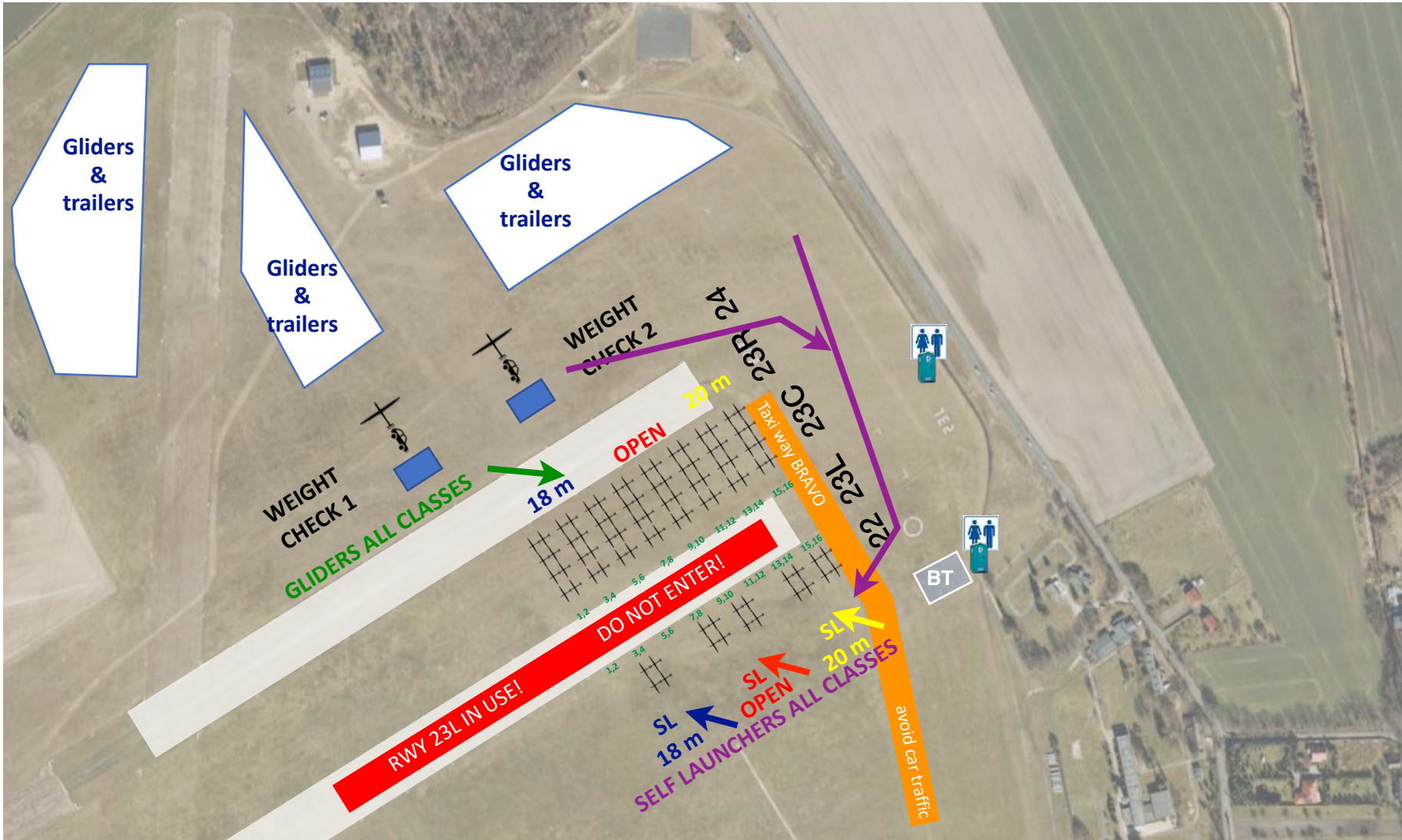
## MAP 4. CONTEST SITE MAP - ADMINISTRATION



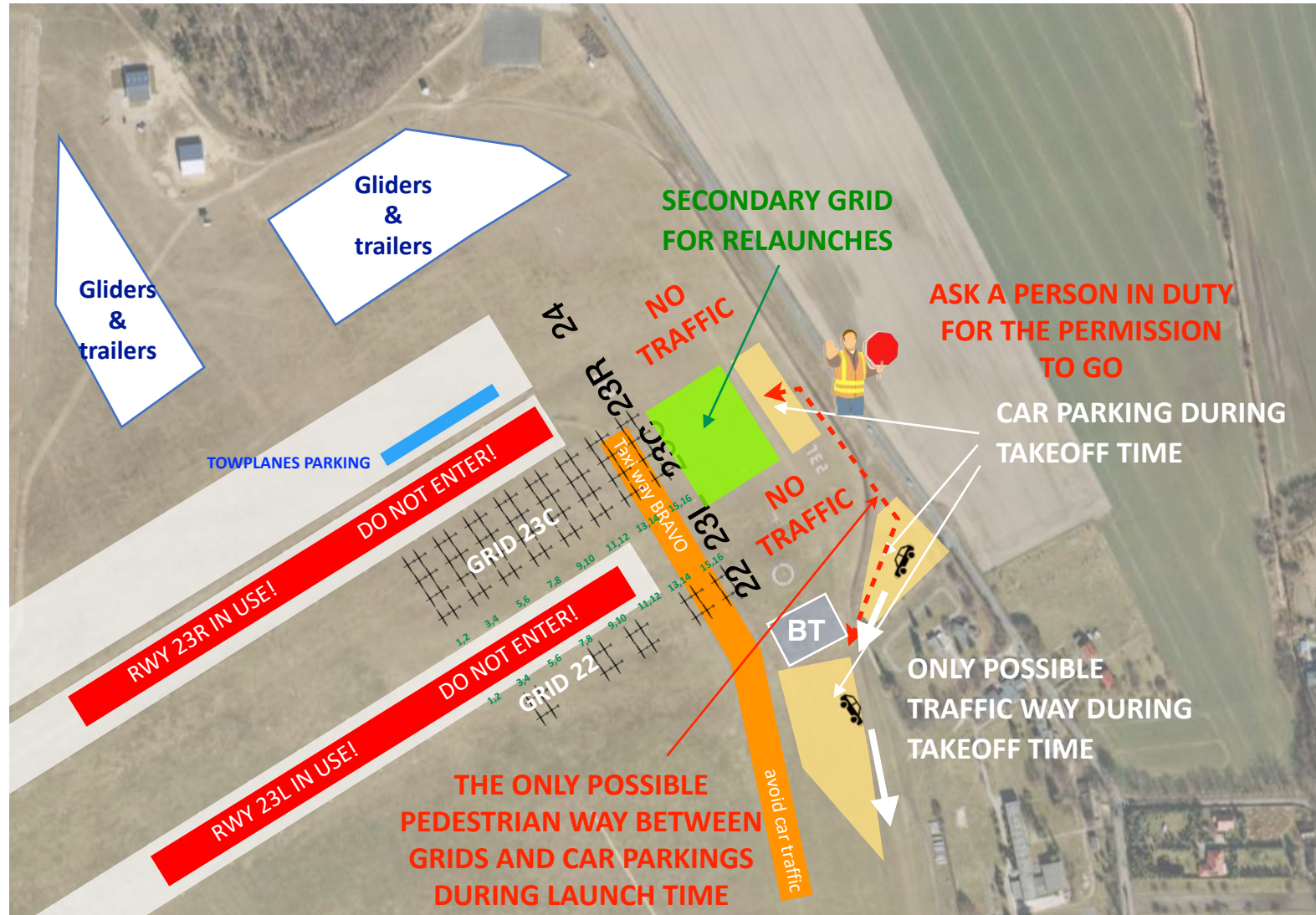
- BT – BRIEFING & MEALS TENT (AIRSIDE)
- CO – CONTEST OFFICE & REGISTRATION (HANGAR 1)
- SO - SCORING OFFICE
- CD - CONTEST DIRECTOR
- TI – TECHNICAL INSPECTION
- S- STEWARDS
- J- JURY
- MG – MAIN AIRFIELD GATE
- TP - TOWPLANES PARKING - AREA STRICTLY PROHIBITED
- NP – NO PARKING ZONE (AIRSIDE)





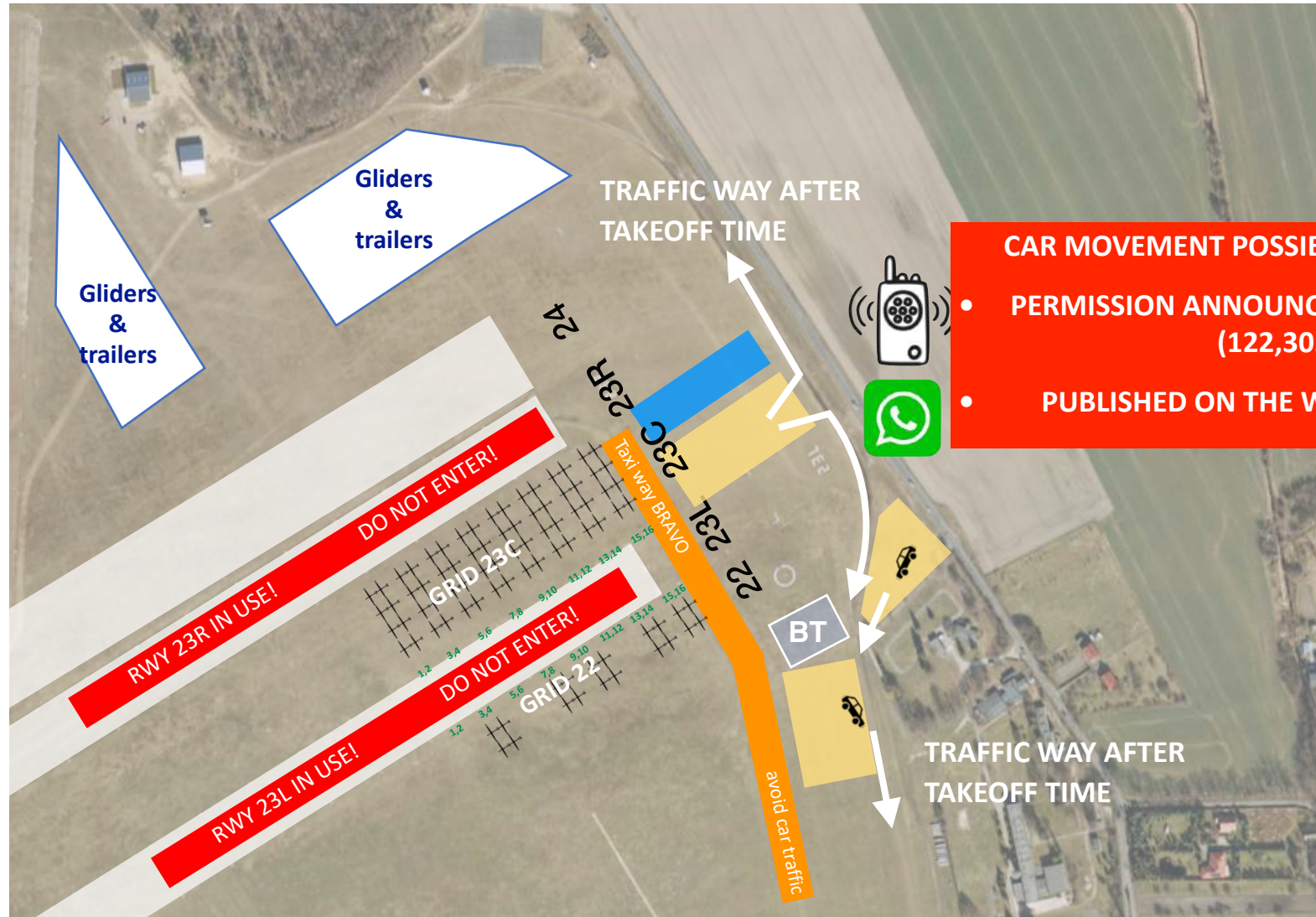


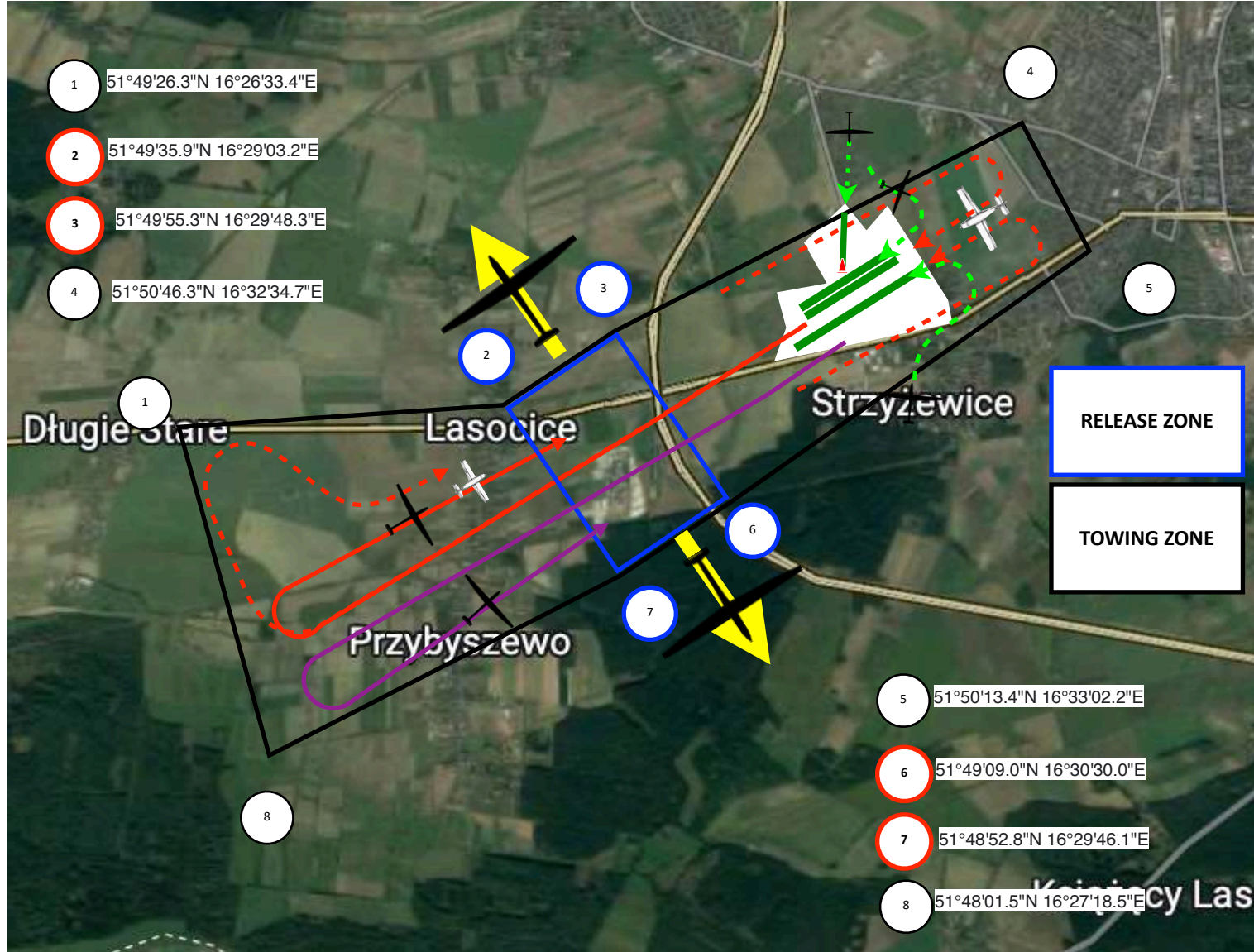
# MAP 5a. GRID 23 - car parking and traffic during takeoff time





## MAP 5b. GRID 23, CAR TRAFFIC AFTER TAKEOFF FINISHED









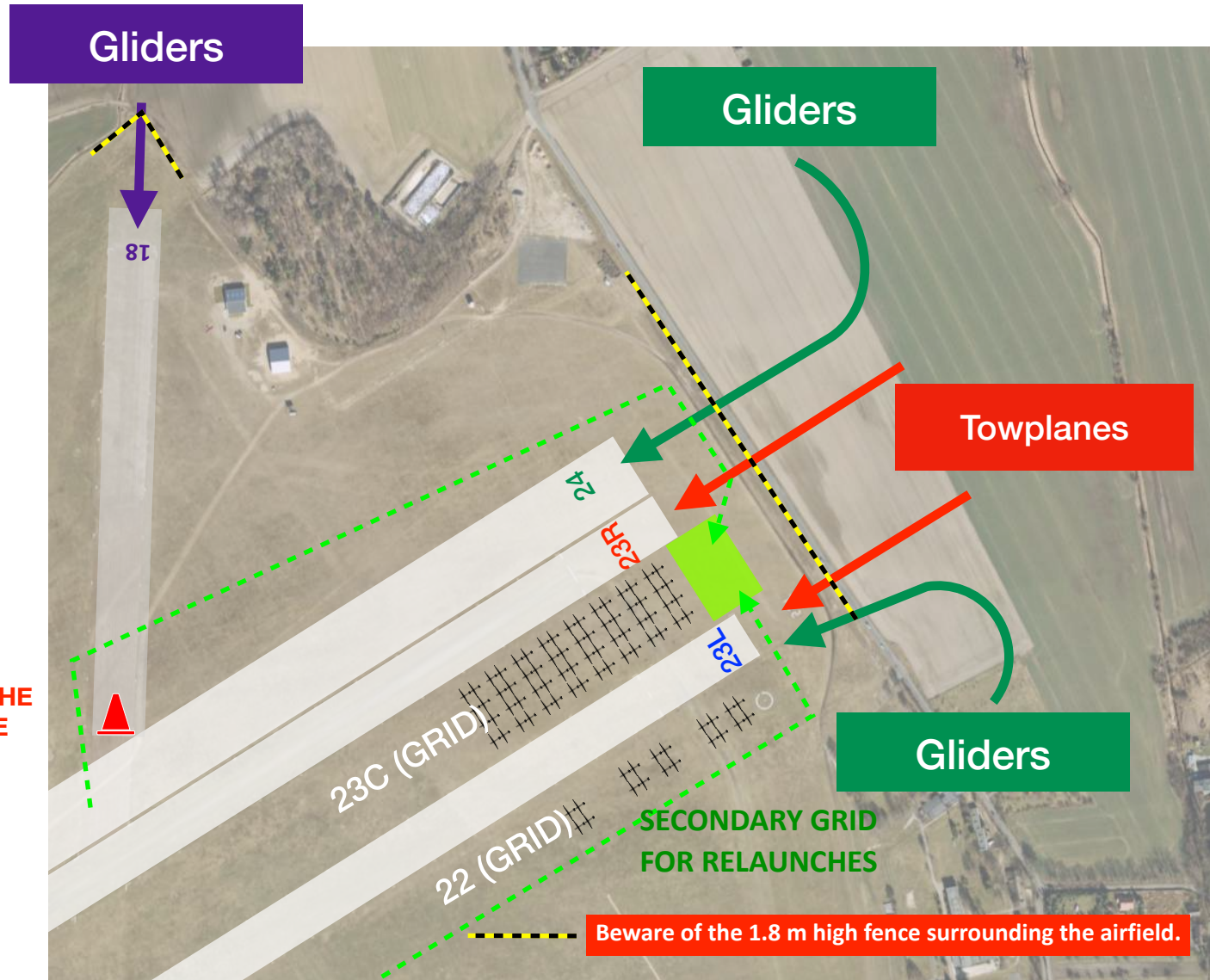
## MAP 7. LANDING PROCEDURE 23 FOR RELAUNCH

**LANDING ON RUNWAY 18 WILL ONLY BE POSSIBLE IF THE ORGANIZER GIVES THE PERMISSION.**

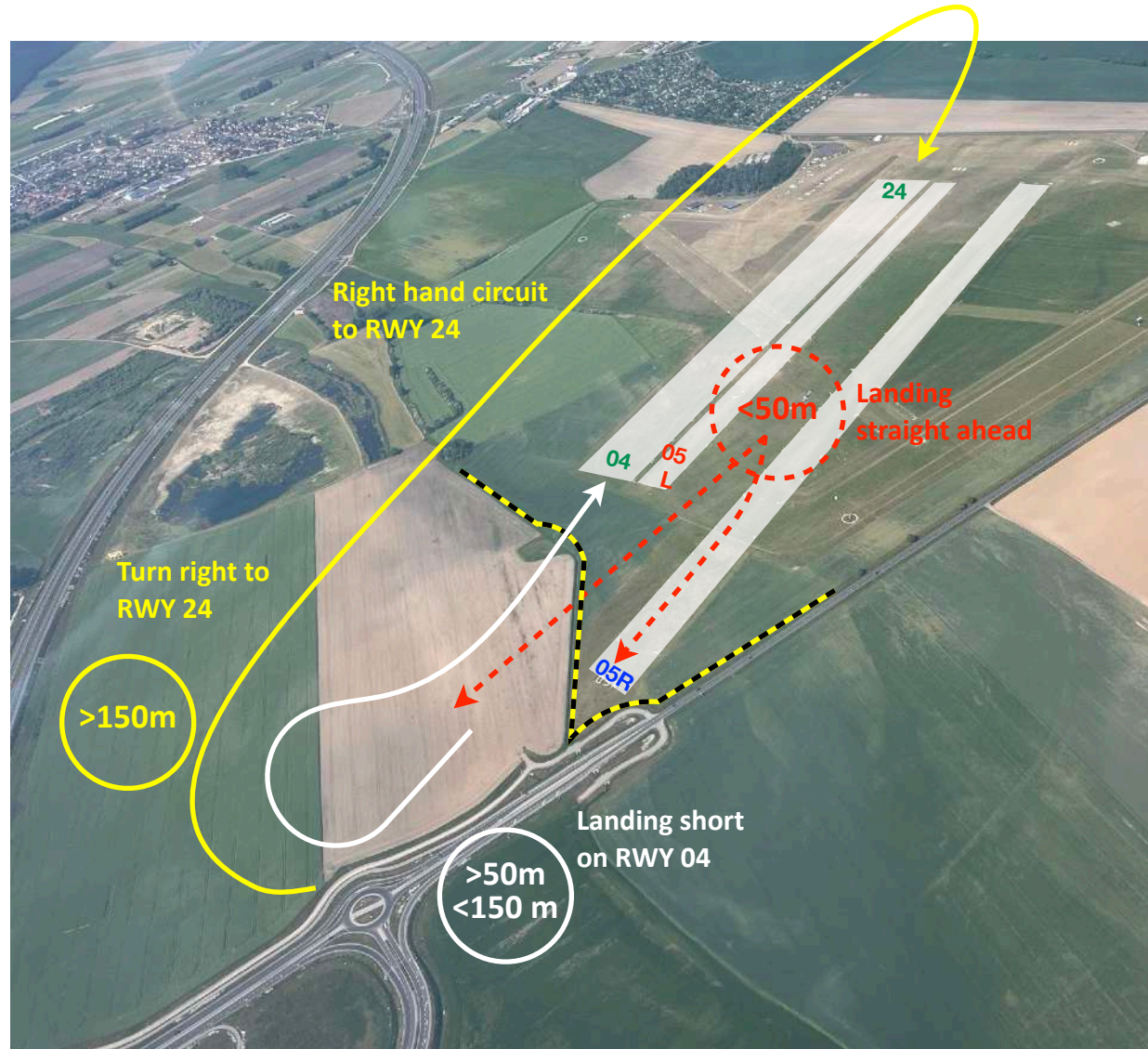
**Landing conditions:**

- tail wind component not greater than 5 m/s (10 Kt)
- cross wind component not greater than 8 m/s (15 Kt)
- the landing glider must stop before the northern edge of runway 24 at the latest!

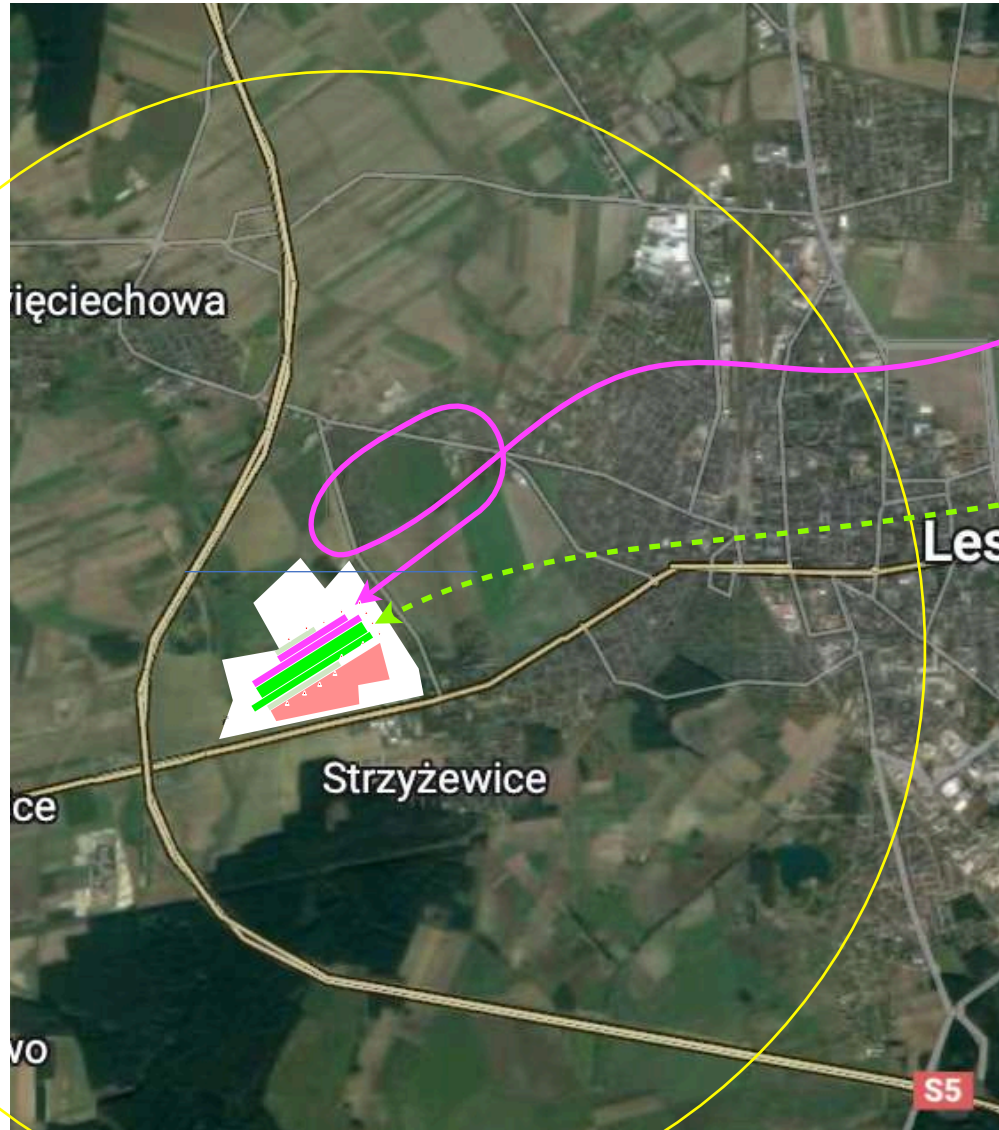
**STOP BEFORE THE TRAFFIC CONE**







## MAP 8. FINISH AND LANDING PROCEDURE 23

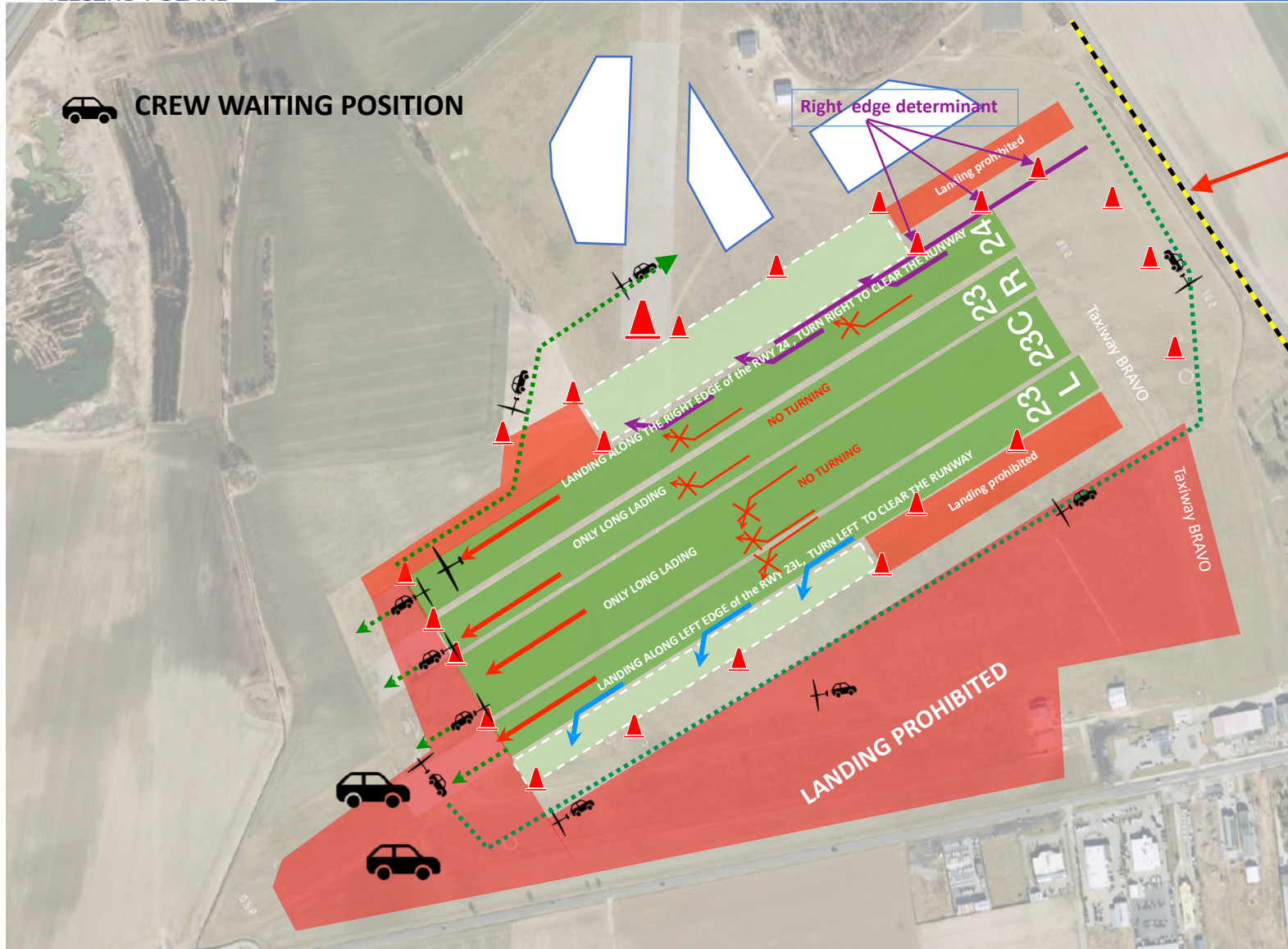


**SPEED FINISH** - avoiding sudden maneuvers - gliders lower altitude and speed in Right Hand Circuit and land on runway 23R or 24

Gliders with lower energy land straight on runways 23C, 23L.



## MAP 9. LANDING PROCEDURE 23 AND TOWING BACK TO GLIDERS PARKING



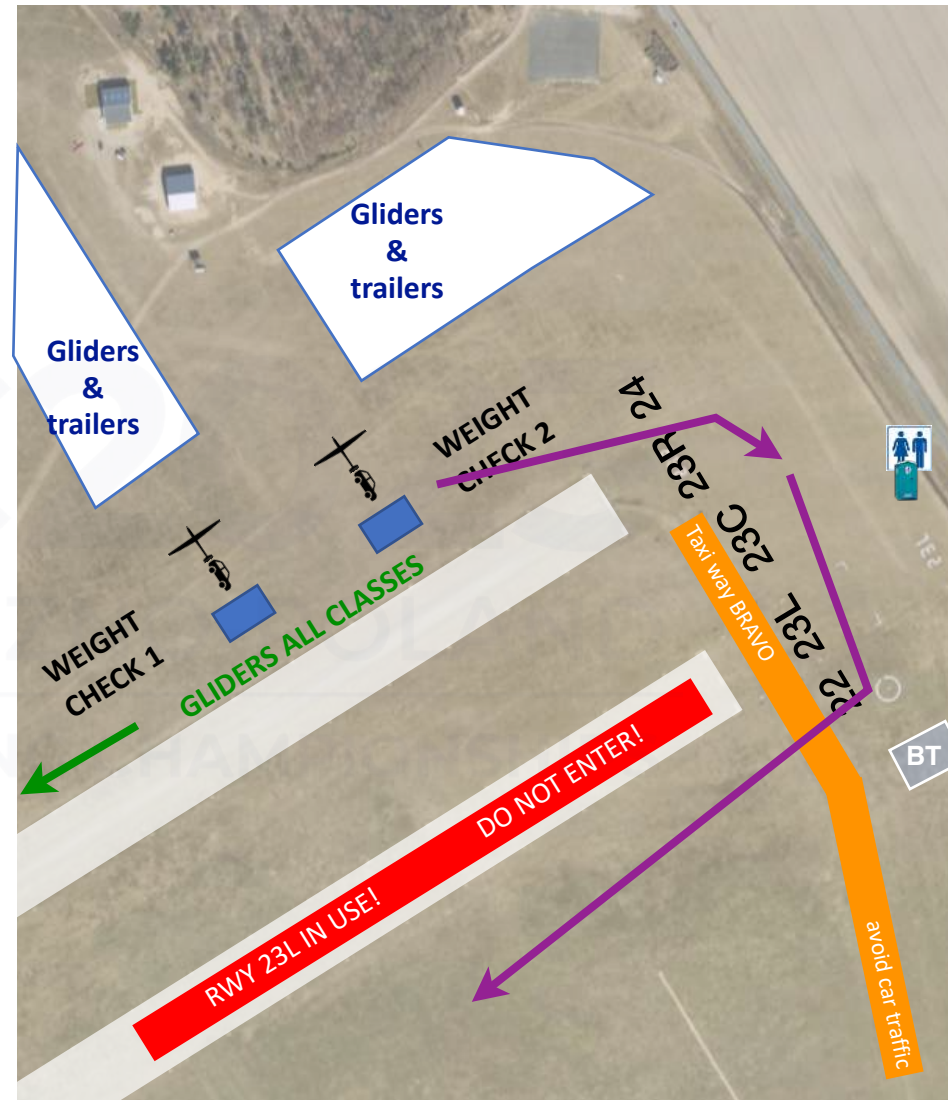
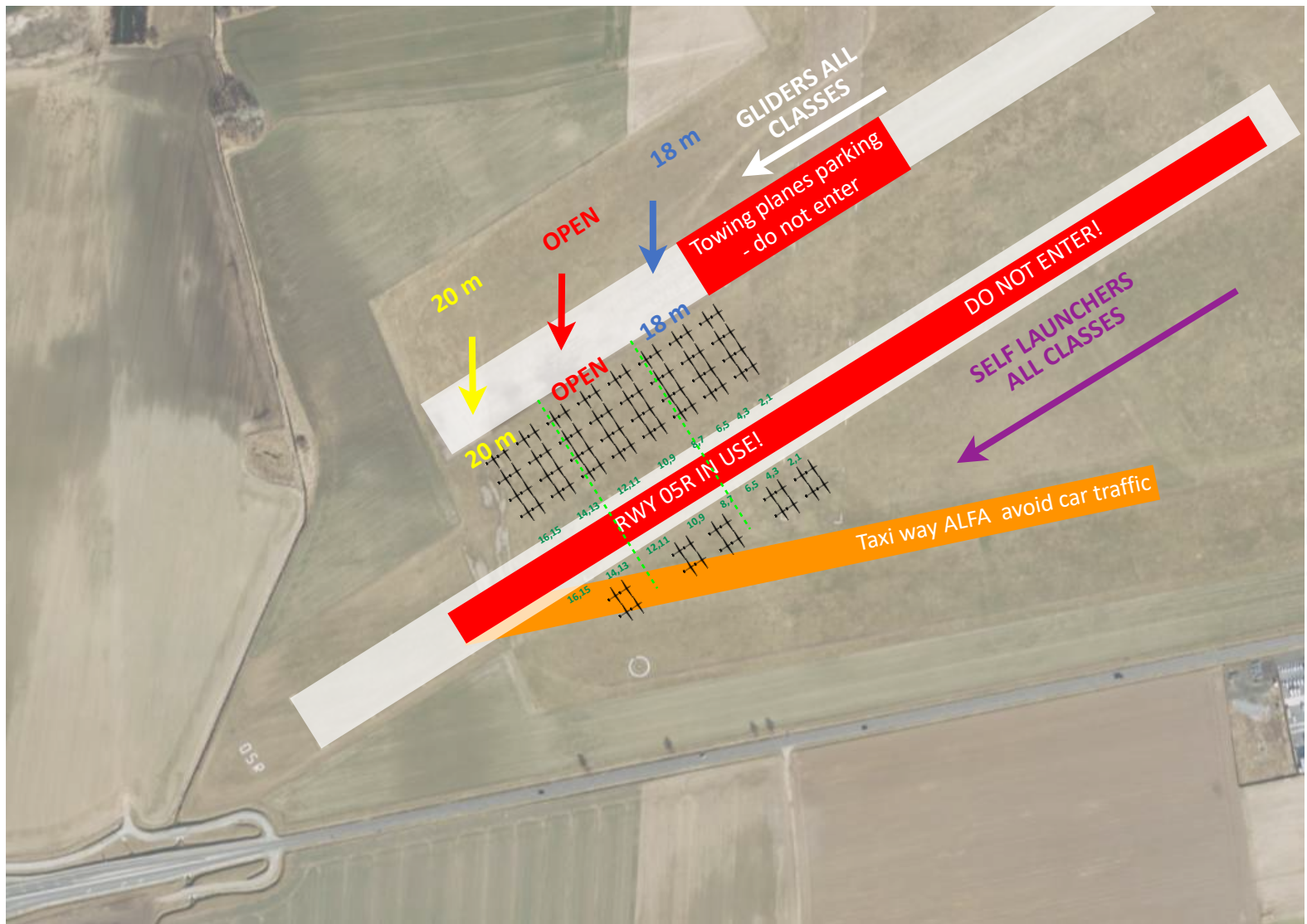
Beware of the 1.8 m high fence surrounding the airfield.

When landing on runways 23 and 24 the minimum height above the asphalt public route is 5 meters.

Gliders landing along and close the northern edge of Runway 24 may leave the runway by turning right in a designated zone only.

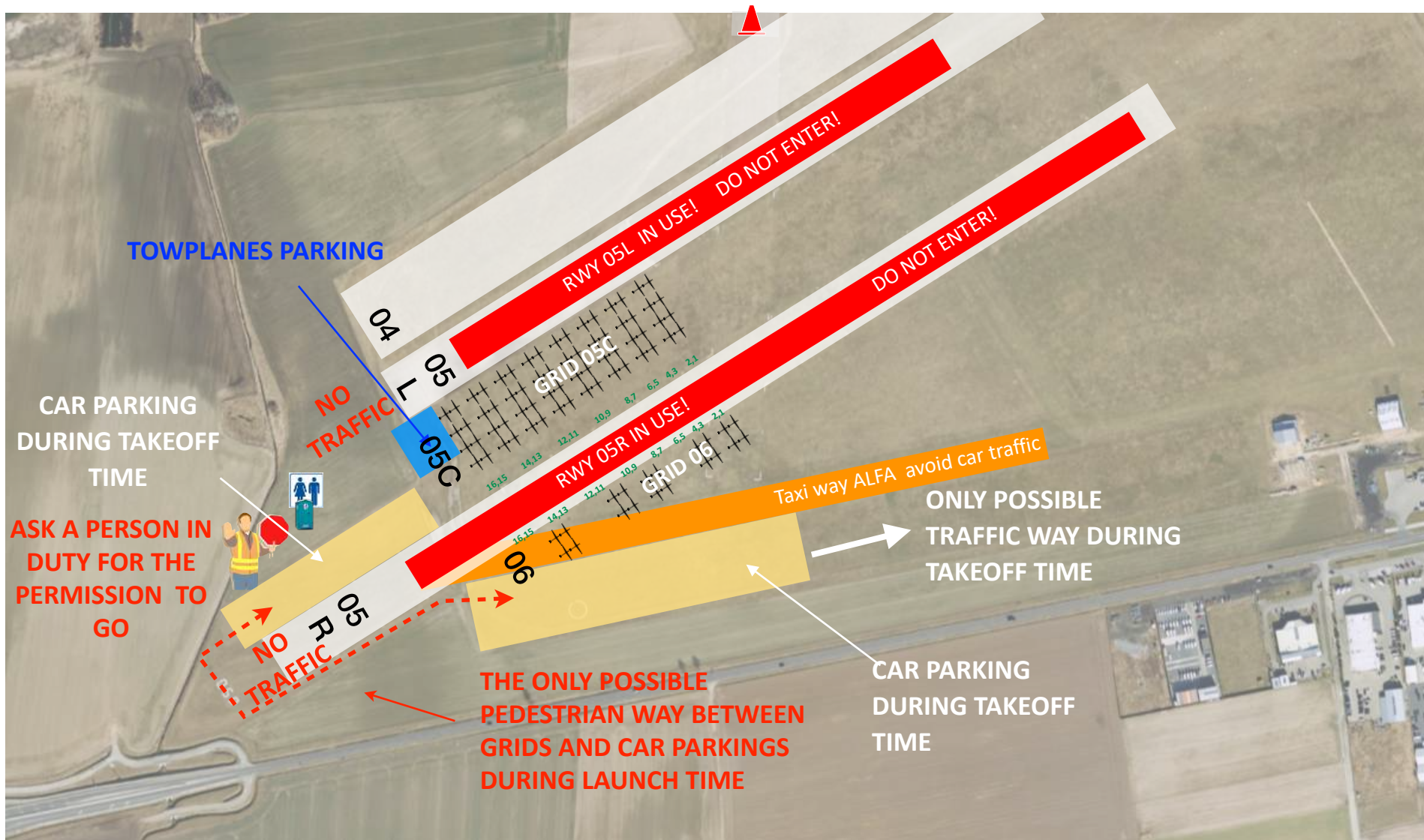
Gliders landing along and close the southern edge of Runway 23L may leave the runway by turning left in a designated zone only.

# MAP 10. GRID 05, WEIGHT CHECK & GRID TRAFFIC

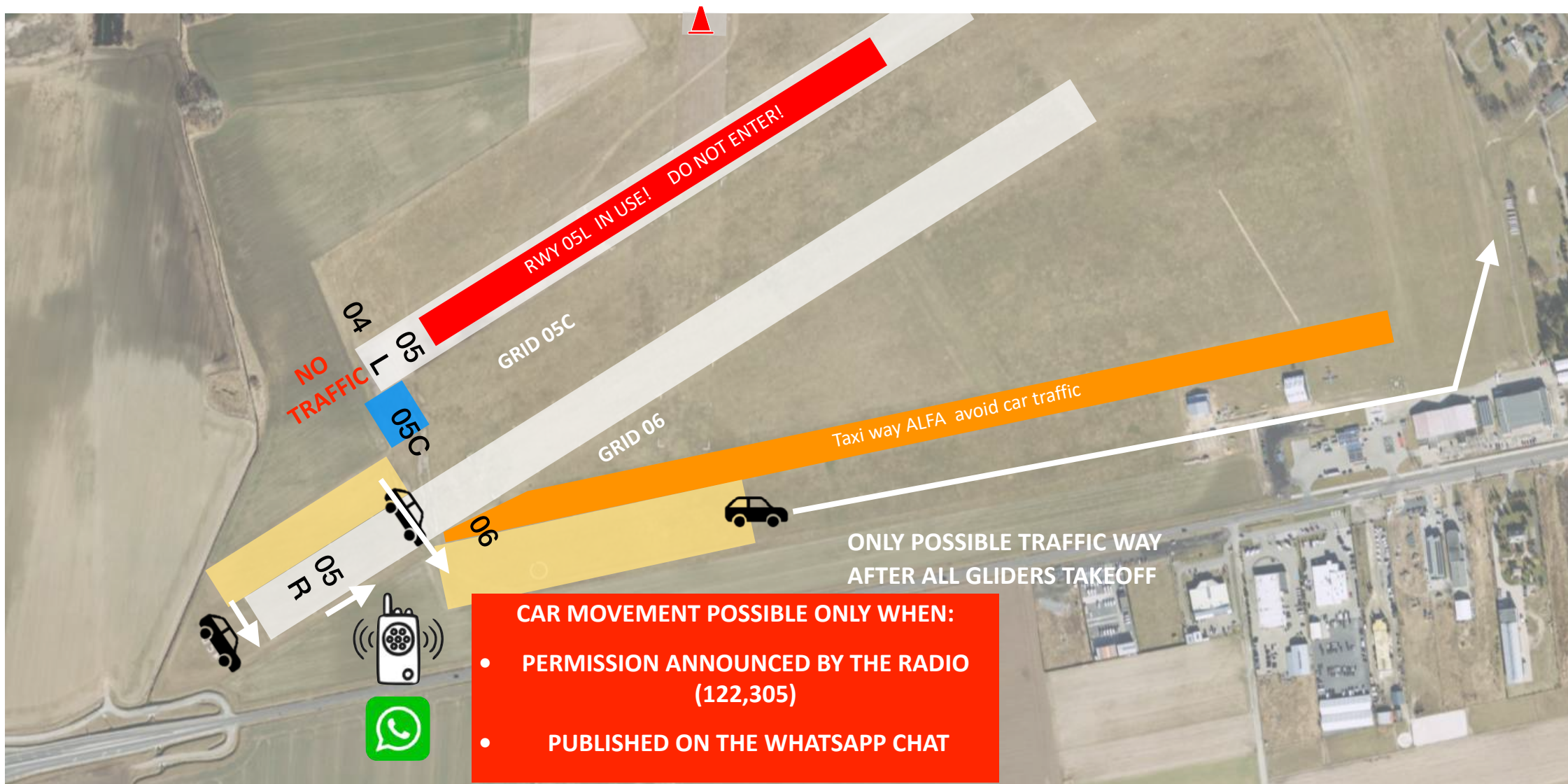




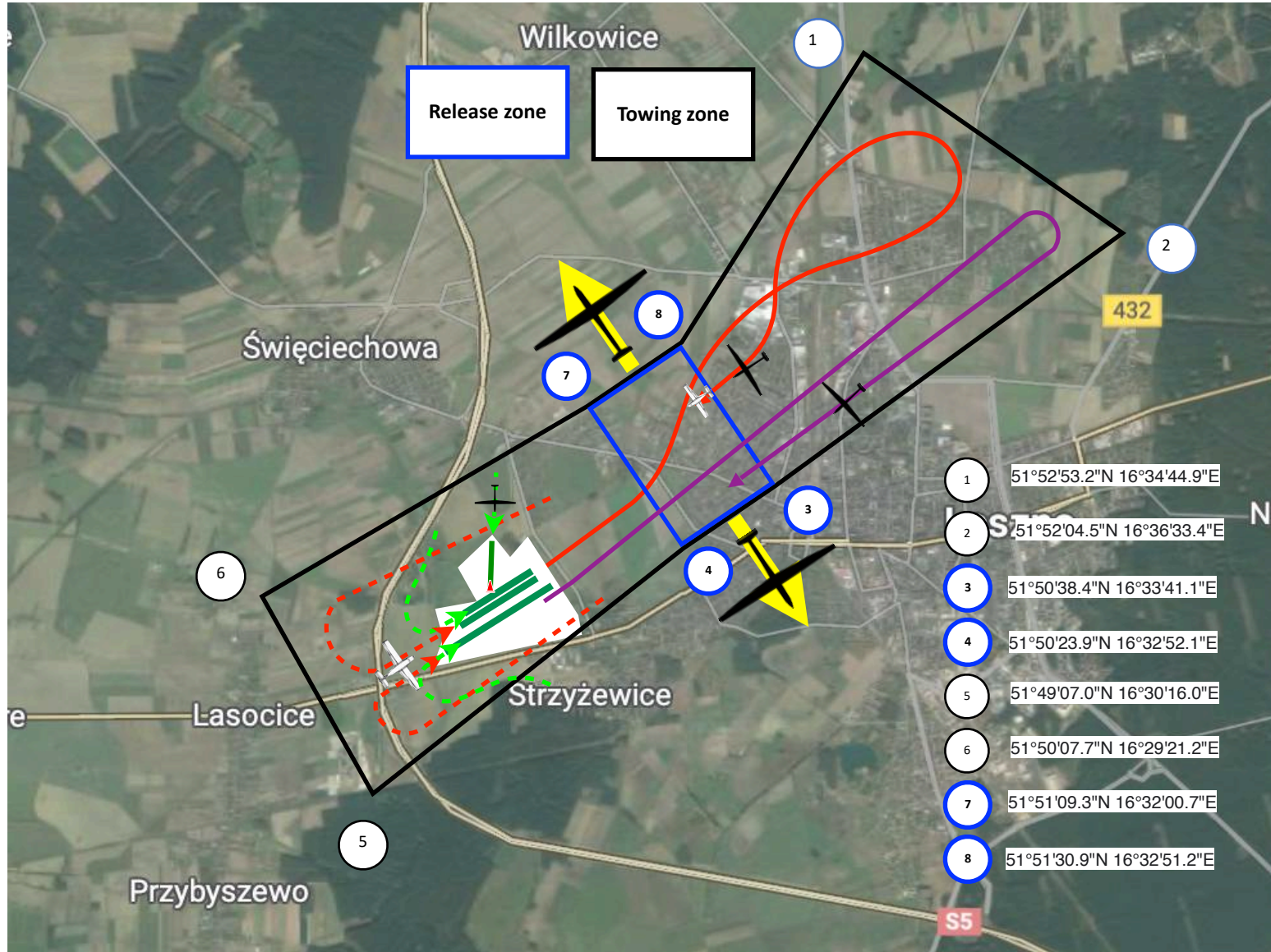
# MAP 10a. GRID 05, car parking and traffic during takeoff time



## MAP 10b. GRID 05, CAR TRAFFIC AFTER TAKEOFF FINISHED



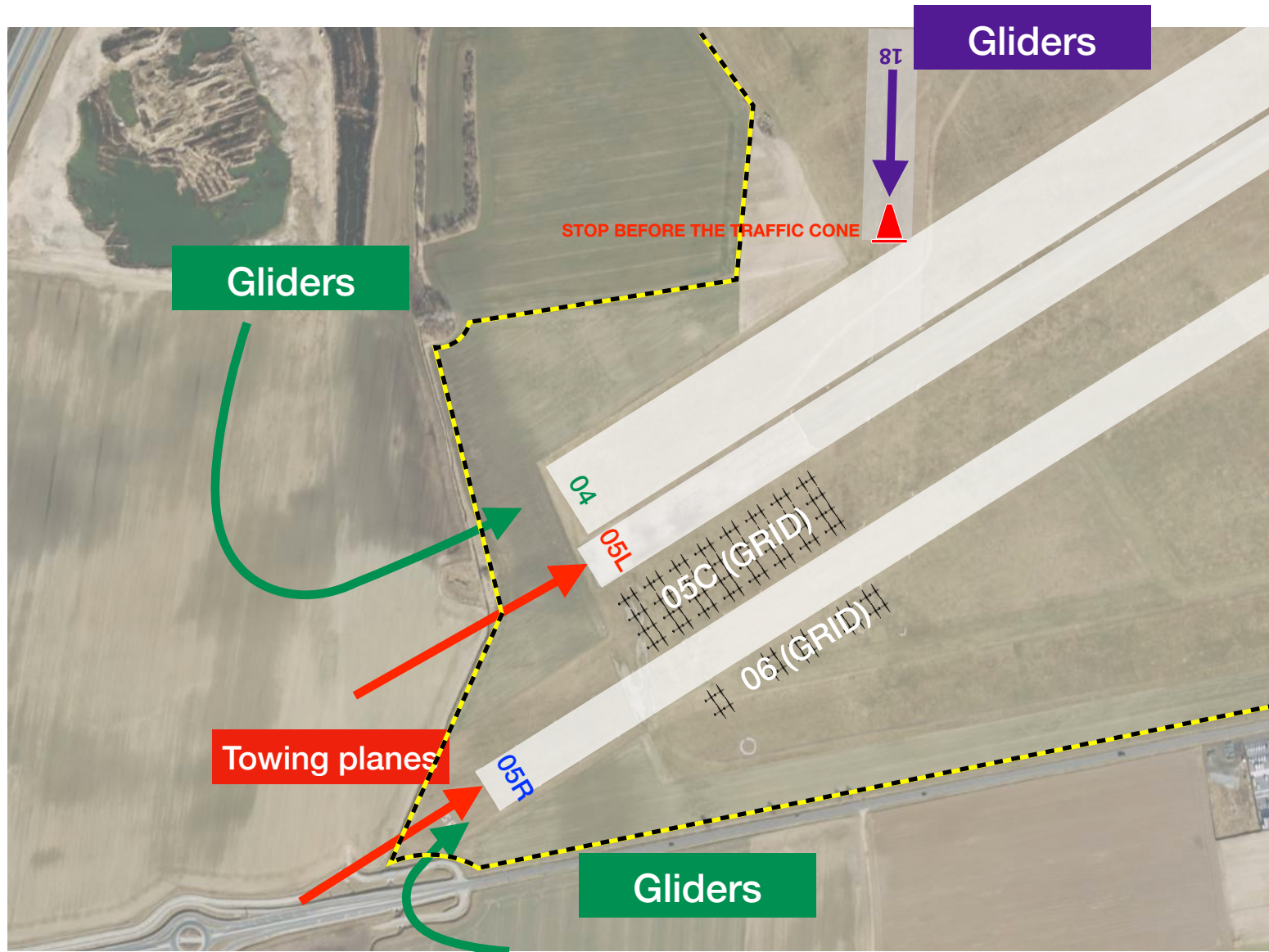




- ←..... Gliders - relanding on 18 shortened runway
- ←--- Gliders - relanding
- ←--- Towplanes Circuit
- ← Towing
- ← Self launchers
- ← Turn direction to departure zone selected for each class





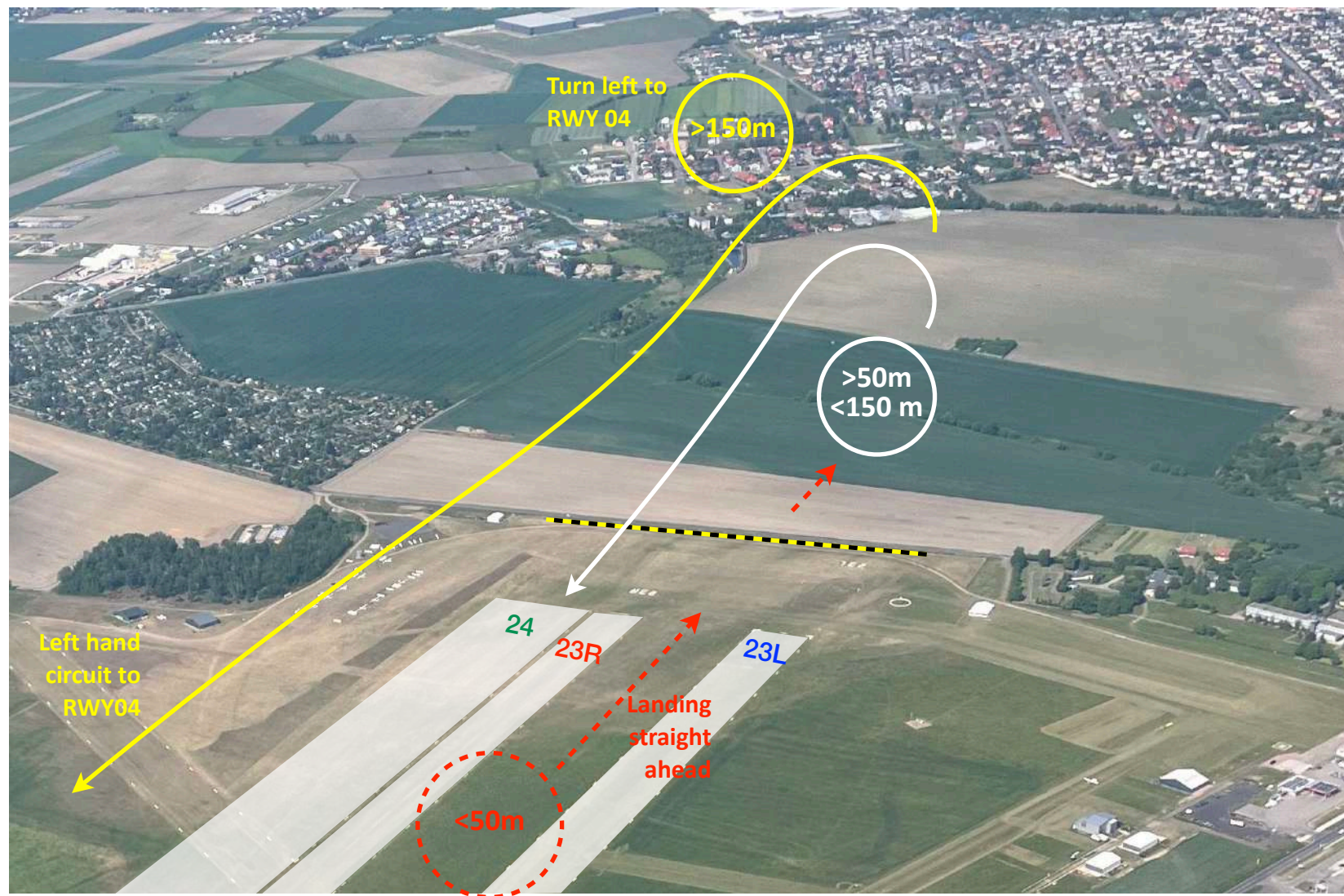


**LANDING ON RUNWAY 18 WILL ONLY BE POSSIBLE IF THE ORGANIZER GIVES PERMISSION.**

Landing conditions:

- tail wind component not greater than 5 m/s (10 Kt)
- cross wind component not greater than 8 m/s (15 Kt)
- the landing glider must stop before the northern edge of runway 04 at the latest!

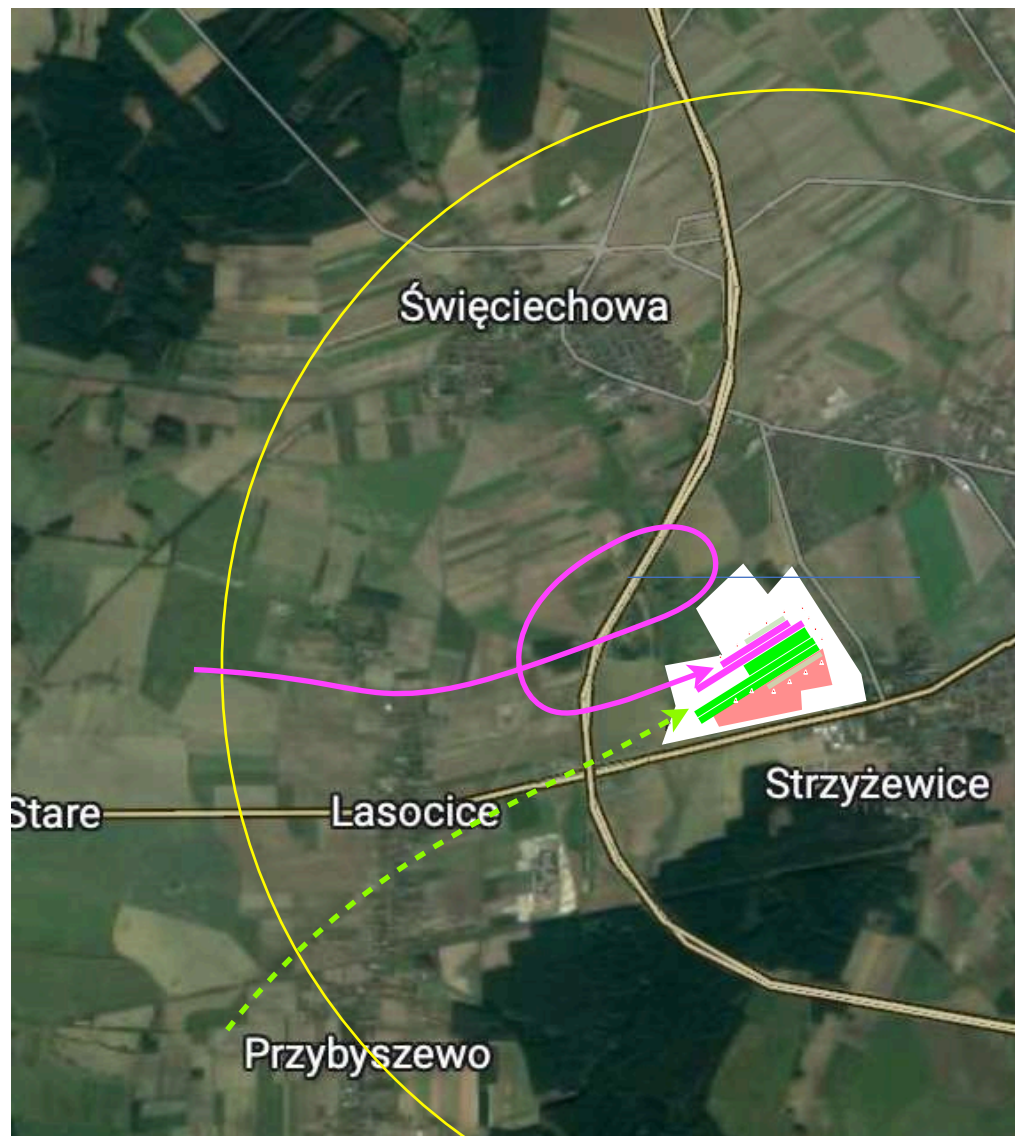






**SPEED FINISH** - avoiding sudden maneuvers - gliders lower altitude and speed north left hand circuit and land on runway 05L or 04

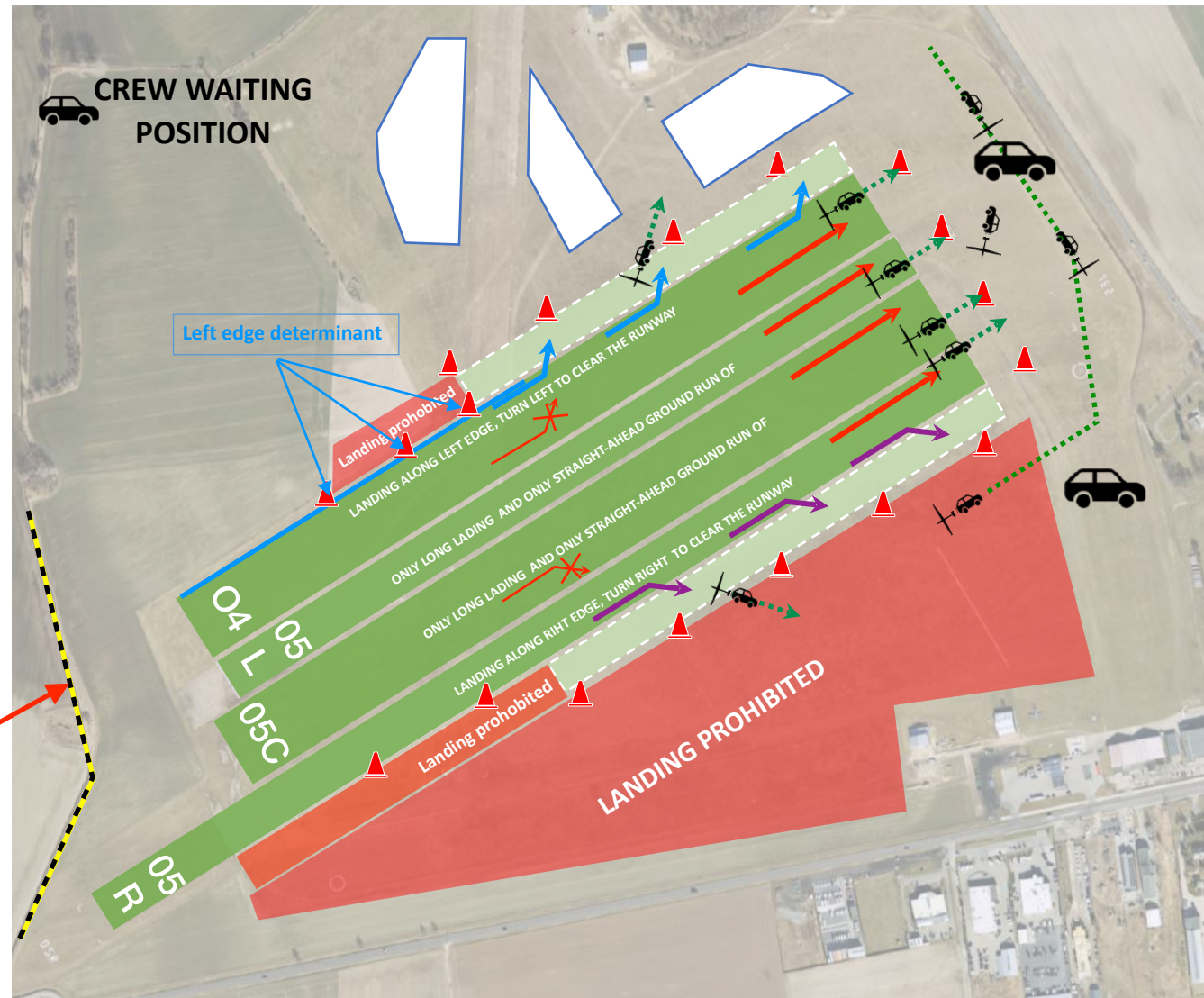
Gliders with lower energy land straight on runways 05C, 05R.



Gliders landing along and close to the northern edge of Runway 04 may leave the runway by turning left in a designated zone only

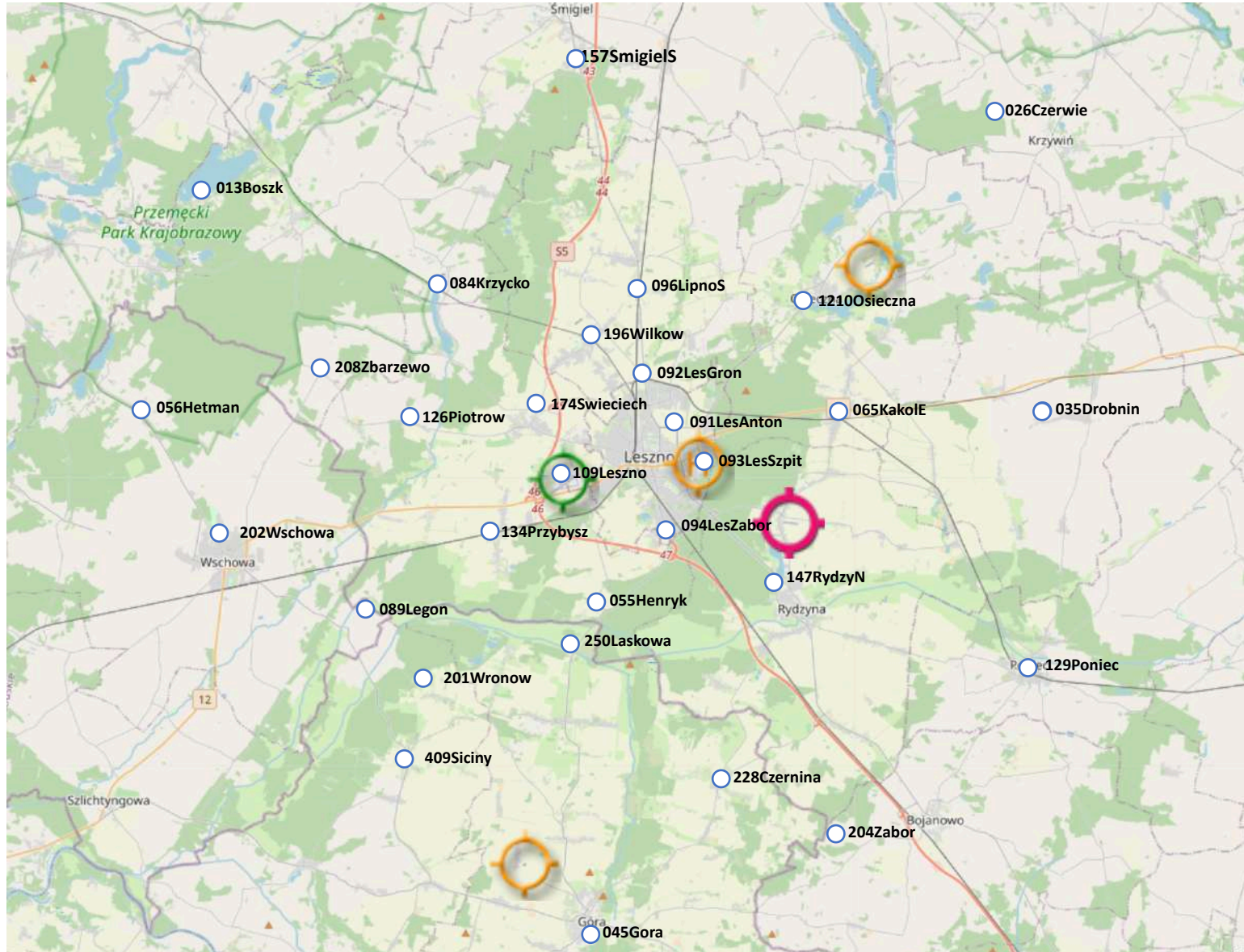
Gliders landing along and close to the southern edge of Runway 05R may leave the runway by turning right in a designated zone only

Beware of the 1.8 m high fence surrounding the airfield.





# MAP 15. DEPARTURE POINTS



**Launch - 122,305 MHz**

**Finish - 122,305 MHz**

**Landing -122,305 MHz**

**Start gate frequency - 120,705 MHz**

**Common Safety frequency - 120,705 MHz**

**Other: The list of Team Frequencies will be announced before the training period.**